

Q6 #613 Blonde Remy Hair Toupee for Women: A Perfect Blend of Elegance and Comfort

The quest for natural-looking, comfortable, and durable hairpieces ends with the Emeda Breathable Q6 #613 Blonde Lace Top with PU Back Remy Hair Toupee for Women. This exquisite toupee is a masterful creation that seamlessly blends premium craftsmanship with the finest quality materials. Whether you are looking to enhance your appearance due to hair thinning or to change your hairstyle for fashion purposes, this toupee offers the perfect solution.

Hair Type	Remy human hair
Cap structure	Lace base with PU, Q6 women toupee
Cap Size	XS, S, M, L, XL
Hair Length	18", if want other length welcome to inquiry
Texture	Straight stock, could make wave
Hair Density	130%, could customize
Hair Color	Villa color, Different colors in stock, other colors please inquiry
Lifespan	1-2Years
Delivery Time	24 hours for processing order. shipping time 4-5 working days
Customize time	About 7 days
Shipping Method	Ship via fedex, dhl etc

Introduction to [Emeda](#): A Name Synonymous with Quality

Emeda is a trusted name in the hair industry, known for delivering high-quality hair extensions, wigs, and toupees. Their products are crafted with precision, using only the best materials to ensure that each piece offers a natural look and feel. The Emeda Breathable Q6 #613 Blonde Lace Top with PU Back Remy Hair Toupee for Women is no exception. This product is designed to cater to the needs of women seeking a reliable and stylish hairpiece that enhances their natural beauty.



Product Overview

The Emeda Breathable Q6 #613 Blonde Lace Top with PU Back [Remy Hair Toupee](#) is designed specifically for women who want a natural-looking hairpiece that is both comfortable and durable. The toupee features a lace top, which provides a realistic scalp appearance, and a PU (polyurethane) back, which ensures a secure and comfortable fit.



Key Features:

High-Quality Remy Hair: The toupee is made from 100% Remy human hair, which is known for its superior quality. Remy hair is collected in a way that ensures all the hair cuticles are aligned in the same direction, reducing tangling and ensuring a smooth, silky texture.

Lace Top: The lace top of the toupee is designed to mimic the appearance of a natural scalp, allowing the hair to blend seamlessly with your own. The fine lace material is breathable, providing comfort for long-term wear.

PU Back: The PU back of the toupee offers a secure fit, ensuring that the hairpiece stays in place throughout the day. The PU material is also durable, extending the lifespan of the toupee.

Natural Blonde Shade (#613): The toupee is available in the #613 blonde shade, a popular choice for those seeking a light, bright, and natural hair color. The shade is versatile and can be easily dyed or styled to match your personal preferences.

Breathable Design: The combination of lace and PU materials makes this toupee breathable, ensuring comfort even in warm weather. The breathable design also helps in maintaining the health of your natural hair and scalp.

Detailed Product Description

1. The Elegance of Remy Hair

The Emeda Breathable Q6 toupee is crafted from 100% Remy human hair, known for its unmatched quality and natural appearance. Remy hair is carefully selected to ensure that the cuticles are intact and aligned in the same direction, which significantly reduces the risk of tangling and matting. This meticulous process results in a toupee that feels incredibly soft, smooth, and luxurious to the touch. The natural movement and shine of Remy hair make this toupee virtually indistinguishable from your own hair, offering a flawless blend that enhances your overall look.

2. The Natural Look of the Lace Top

The lace top is a standout feature of the Emeda Breathable [Q6 toupee](#). The lace material is ultra-fine and sheer, allowing it to blend seamlessly with your scalp. This creates the illusion of hair growing directly from your scalp, making it nearly impossible to detect that you are wearing a toupee. The lace top also allows for versatile styling options, including the ability to part the hair in any direction. Whether you prefer a middle part, side part, or no part at all, the lace top gives you the freedom to style your hair as you desire.



The breathable nature of the lace material ensures that your scalp remains cool and comfortable, even during extended wear. This is especially important for women who live in warmer climates or who are prone to sweating. The lace top not only provides a natural look but also contributes to the overall comfort of the toupee.

3. The Durability and Security of the PU Back

The PU back of the toupee offers a range of benefits, including durability, security, and ease of use. The PU material is strong and long-lasting, ensuring that your toupee maintains its shape and fit over time. The PU back also provides a secure fit, preventing the toupee from slipping or shifting during wear. This is particularly important for women who lead active lifestyles or who require a toupee that can withstand daily wear and tear.

Another advantage of the PU back is its compatibility with adhesive tapes and glues, which can be used to secure the toupee in place. The smooth surface of the PU material allows for a strong bond with adhesives, ensuring that the toupee stays in place throughout the day. This feature provides added peace of mind for those who are concerned about the toupee moving or slipping.

4. The Versatility of the #613 Blonde Shade

The #613 blonde shade is a popular choice for women who want a light, bright, and natural hair color. This shade is versatile and can be easily dyed or toned to match your personal preferences. Whether you prefer a cool, ashy blonde or a warm, golden hue, the #613 shade provides a perfect canvas for customization.



The blonde color is achieved through a careful bleaching process that maintains the integrity of the hair while achieving the desired shade. The result is a vibrant,

luminous color that enhances your overall appearance. The #613 blonde shade is also ideal for women who want to experiment with bold colors, as it provides a light base that can easily be transformed with fashion dyes.

5. The Comfort of a Breathable Design

Comfort is a key consideration when choosing a toupee, and the Emeda Breathable Q6 toupee excels in this regard. The combination of lace and PU materials creates a toupee that is breathable and comfortable to wear, even for extended periods. The lace top allows air to circulate freely around your scalp, preventing heat buildup and reducing the risk of irritation. The PU back is also designed to be lightweight and comfortable, ensuring that the toupee does not feel heavy or cumbersome on your head.

This breathable design is particularly important for women who experience hair loss due to medical conditions or treatments, as it helps to protect the delicate scalp while providing a natural and stylish appearance. The Emeda Breathable Q6 toupee offers a comfortable and secure fit, allowing you to wear it with confidence throughout the day.

Why Choose the Emeda Breathable Q6 Toupee?

The Emeda Breathable Q6 #613 Blonde Lace Top with PU Back Remy Hair Toupee for Women offers a range of benefits that make it an excellent choice for anyone seeking a high-quality, natural-looking hairpiece. Here are just a few reasons why this toupee stands out from the competition: **Premium Materials:** Made from 100% Remy human hair, the toupee offers a natural look and feel that is unmatched by synthetic alternatives. The use of high-quality lace and PU materials ensures durability and comfort.



1. **Realistic Appearance:** The lace top creates the illusion of a natural scalp, making the toupee virtually undetectable. The #613 blonde shade is versatile and can be easily customized to match your desired look.
2. **Comfort and Breathability:** The breathable design of the toupee ensures that your scalp remains cool and comfortable, even during extended wear. The lightweight PU back adds to the overall comfort of the toupee.
3. **Secure Fit:** The PU back provides a secure fit that prevents the toupee from slipping or shifting, giving you peace of mind throughout the day.
4. **Versatile Styling Options:** The lace top allows for versatile styling, including the ability to part the hair in any direction. The #613 blonde shade provides a perfect canvas for further customization with dyes and toners.

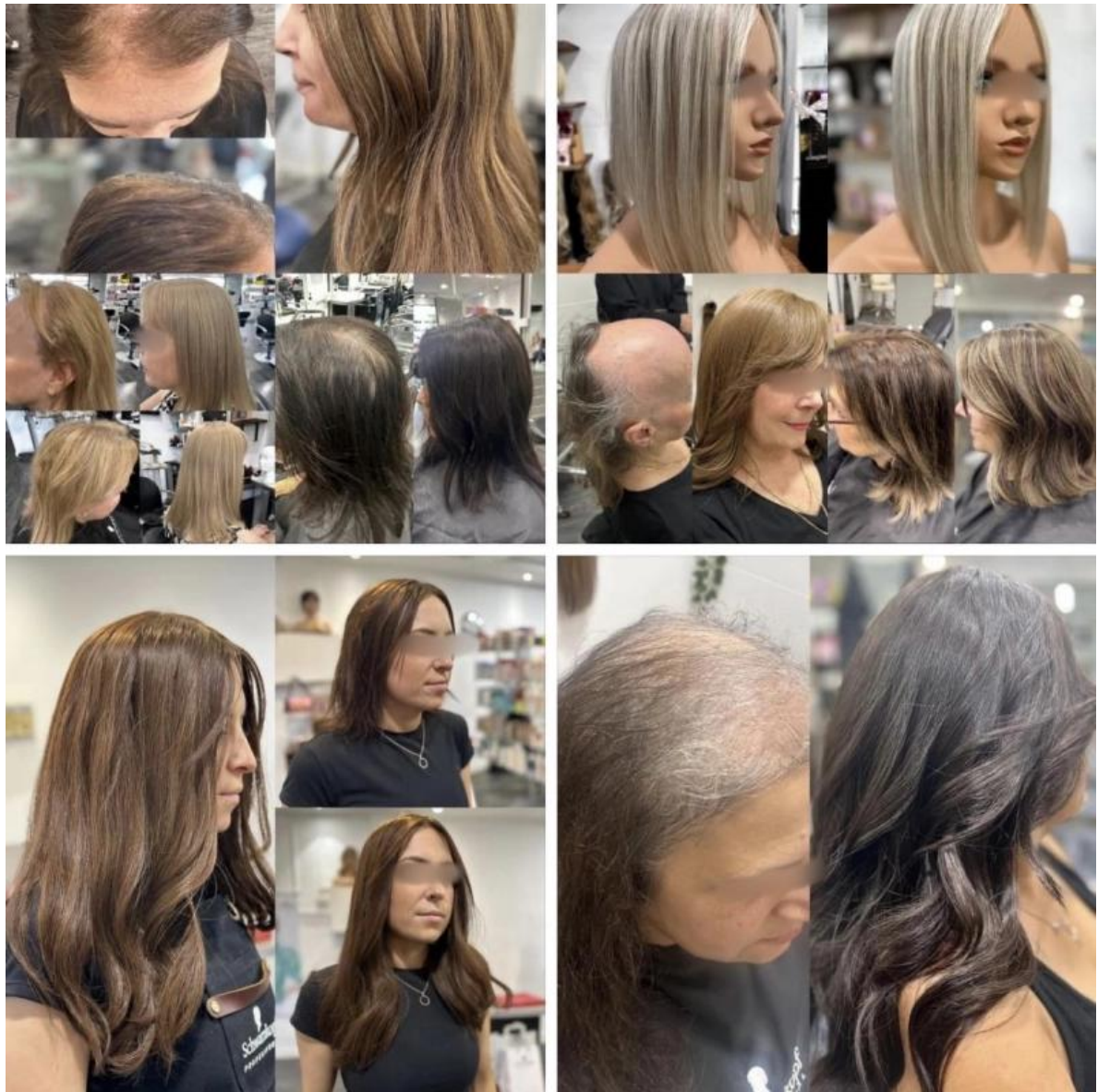
Caring for Your Emeda Breathable Q6 Toupee

To ensure the longevity and continued beauty of your Emeda Breathable Q6 toupee, it is important to follow a proper care routine. Here are some tips for maintaining your toupee:

1. **Washing:** Use a mild shampoo and conditioner specifically formulated for human hair wigs and toupees. Gently wash the toupee in lukewarm water, avoiding excessive rubbing or wringing. Rinse thoroughly and allow the toupee to air dry on a wig stand.
2. **Styling:** The toupee can be styled using heat tools such as curling irons and straighteners. However, it is important to use a heat protectant spray to prevent damage to the hair. Avoid using excessive heat, as this can cause the hair to become dry and brittle.
3. **Storage:** When not in use, store the toupee on a wig stand or in a box to maintain its shape. Avoid exposing the toupee to direct sunlight or heat sources, as this can cause the hair to fade or become damaged.
4. **Regular Maintenance:** To keep your toupee looking its best, it is recommended to have it professionally cleaned and styled every few months. This will help to maintain the quality of the hair and ensure that the toupee continues to look natural and beautiful.

Conclusion

In essence, the Emeda Breathable Q6 #613 Blonde Lace Top with PU Back Remy Hair Toupee is the embodiment of elegance, comfort, and practicality. It empowers women by offering them the ability to achieve their desired look with ease and confidence, knowing they are wearing a high-quality, natural-looking toupee that blends seamlessly with their own hair. Whether for daily wear, special occasions, or simply to change up your style, this toupee is a versatile addition to any woman's beauty arsenal.



FAQs:

1. What is the Emeda Q6 #613 Remy Hair Toupee made of?

This toupee is made from 100% real Remy human hair, ensuring a natural look and feel.

2. Can I style the toupee with heat tools such as curling irons or straighteners?

Yes, since it is made of real human hair, you can style it with heat tools. However, it's important to use a heat protectant to prevent damage.

3 .How should I care for and maintain the toupee?

Use gentle shampoos and conditioners designed for wigs and hairpieces. Allow the toupee to air dry on a wig stand and avoid exposing it to direct sunlight or high heat.

4. Can the toupee be dyed or colored?

Yes, the toupee can be dyed or colored, but it is recommended to consult with a professional stylist to ensure the best results and avoid damaging the hair.

5. How do I apply the toupee securely?

The toupee comes with a PU base that can be attached using adhesive or tape. Ensure that the scalp is clean and dry before application for a secure fit.

6. Is the lace top noticeable when wearing the toupee?

No, the lace top is designed to mimic the natural scalp, making the toupee virtually undetectable when worn properly.

7. How long can I wear the toupee each day?

The breathable design of the toupee allows for comfortable all-day wear. However, it's recommended to remove it before sleeping to extend its lifespan.

8. What is the expected lifespan of the toupee with regular use?

With proper care and maintenance, the toupee can last from 6 months to over a year, depending on how frequently it is worn and how well it is maintained.

9. Can the toupee be worn during physical activities such as swimming or exercising?

It is not recommended to wear the toupee while swimming, as chlorine and saltwater can damage the hair. For exercising, ensure the toupee is securely attached, but avoid excessive sweating to maintain its condition.

10. Is the toupee suitable for sensitive scalps?

Yes, the toupee is designed to be gentle on the scalp, with a breathable lace top that reduces irritation, making it suitable for those with sensitive skin.

[Contact Us](#)

For more information or to place an order, please contact us:

Emeda Hair Factory
Phone: 8619953208601
Email: sales10@emedahair.com

Profile



Alisa

Work Experience: 5 years

Hobby: Play Badminton

Motto: Simple but not simple, life because of unique and wonderful.

